

Stoichiometry Practice Items

1. How many moles of C_2H_6 are present in 600 mg?

- A. .002 moles
- B. .02 moles
- C. 10 moles
- D. 20 moles

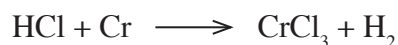
2. How many grams of acetylene combine with 500 g Br_2 in a reaction to completion to form $C_2H_2Br_4$?

- A. 10 g
- B. 41 g
- C. 81 g
- D. 250 g

3. Germanium is an element used in semiconductors. How many atoms of germanium are there in 35.5g of germanium?

- A. 8.0×10^{18}
- B. 1.6×10^{19}
- C. 2.9×10^{23}
- D. 1.2×10^{24}

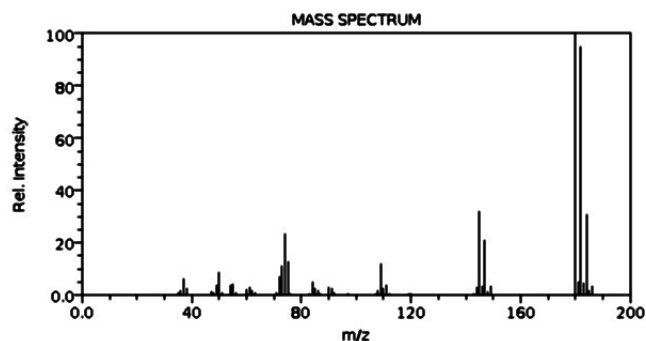
4. Which is the sum of the coefficients in the following equation when balanced?



- A. 6
- B. 9
- C. 13
- D. 14

5. A compound with empirical formula C_2ClH was analyzed by mass spectrometry. What is the molecular formula of the compound?

- A. C_2ClH
- B. $C_4Cl_2H_2$
- C. $C_6Cl_3H_3$
- D. $C_8Cl_4H_4$



6. What is the simplest chemical formula for the following compound, which has this percent composition by weight?

carbon 39%
hydrogen 16%
nitrogen 45%

- A. CH_5N
- B. C_2H_7N
- C. $C_2H_6N_2$
- D. C_3H_9N

7. After hydrated magnesium sulfate was heated for a prolonged period, the remaining salt was found to have lost 51% of its weight. What was the original formula for the hydrate?

- A. $MgSO_4 \cdot 2H_2O$
- B. $MgSO_4 \cdot 4H_2O$
- C. $Mg_2SO_4 \cdot 8H_2O$
- D. $MgSO_4 \cdot 7H_2O$

8. A scientist carries out the complete combustion in the air of 44 grams of the compound $C_aH_bO_c$. 36 grams of water vapor and 88 grams of carbon dioxide are produced. What is the empirical formula of the compound?

- A. $C_4H_8O_1$
- B. $C_2H_4O_1$
- C. $C_2H_5O_1$
- D. $C_4H_4O_1$

9. Acetylene is produced in a reaction between calcium carbide and water.



How many grams of C_2H_2 (acetylene) would be formed if 18 ml of water is consumed?

- A. 13 g
- B. 18 g
- C. 26 g
- D. 28 g

10. The combustion of one mole of an unbranched alkane yields 157 liters of gas at STP. The molecular formula of this compound is

- A. C_2H_6
- B. C_3H_8
- C. C_4H_{10}
- D. C_5H_{12}

11. Seeking to verify the identity of a metal, a laboratory determines that the metal combines with oxygen to form a compound with the formula X_2O_3 . 1.6 grams of oxygen combine with 6.75 grams of the unknown metal X. What is the identity of the metal?

- A. Fe
- B. Ru
- C. Os
- D. Pb

12. How many grams of methanol are formed when 14g of carbon monoxide react to completion with 10g of hydrogen gas?

- A. 5 g
 - B. 7 g
 - C. 16 g
 - D. 24 g
-

Stoichiometry

Answers and Explanations

1. B

The atomic weight of carbon is 12.0u, and the atomic weight hydrogen is 1.0u. Rounding to the whole number value, the molecular weight of C_2H_6 is 30g/mol.

$$MW = \frac{30 \text{ g}}{\text{mol}}$$

A real key to stoichiometric problem solving is to see a molecular weight as a conversion factor. A conversion factor is a variation on the number 1. 30g C_2H_6 is the same thing as 1 mol. You can always turn a conversion factor upside down.

$$\frac{1 \text{ mol}}{30 \text{ g}}$$

Now it's just the simple matter of converting the mass of C_2H_6 given in the problem into moles.

$$\left(\frac{1 \text{ mol}}{30 \text{ g}} \right) 0.6 \text{ g} = \left(\frac{6 \times 10^{-1}}{3 \times 10^1} \right) \text{ mol} \\ = 2 \times 10^{-2} \text{ mol}$$

2. B

With the atomic weights of bromine (79.9u), carbon (12.0u), and hydrogen (1.0u), we have the molecular weights of Br_2 (160g/mol) and acetylene, which is C_2H_2 (26g/mol). We know the stoichiometric ratios of the reagents as they comprise the final compound. A big part of stoichiometrical problem solving is to think on the page through the conversion factors. Lay it out and convert grams Br_2 into moles Br_2 into moles $C_2H_2Br_4$ into moles C_2H_2 into grams C_2H_2 . Use mental math wherever you can, ie.. $500 \div 160 \sim 3$.

$$500 \text{ g } Br_2 \left(\frac{1 \text{ mol } Br_2}{160 \text{ g } Br_2} \right) \left(\frac{1 \text{ mol } C_2H_2Br_4}{2 \text{ mol } Br_2} \right) \left(\frac{1 \text{ mol } C_2H_2}{1 \text{ mol } C_2H_2Br_4} \right) \left(\frac{26 \text{ g } C_2H_2}{1 \text{ mol } C_2H_2} \right) \\ = 41 \text{ g } C_2H_2$$

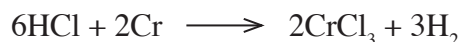
3. C

Think on the page with conversion factors, and because the answer choices are spaced well, feel free to use mental math ($35.5 \div 72.6 \sim 1/2$). Grams to moles and then with Avogadro's number from moles to atoms.

$$35.5 \text{ g } Ge \left(\frac{1 \text{ mol}}{72.6 \text{ g } Ge} \right) \left(\frac{6.02 \times 10^{23} \text{ atoms}}{1 \text{ mol}} \right) = 2.94 \times 10^{23} \text{ atoms}$$

4. C

A chemical equation needs to be balanced to follow the law of conservation of mass. The equation is balanced when the moles of elements in the reactants side is equal to that of the products side. There is no real secret to balancing chemical equations. It's a process of trial and error.



5. C

With the atomic weights of carbon (12.0u), chlorine (35.5u), and hydrogen (1.0u), for the *empirical formula* C_2ClH , we have a *formula weight* of 60.5u.

On the mass spec we see a cluster of peaks near 180u. The reason we don't see a single obvious molecular peak is that there are two stable isotopes of chlorine, ^{35}Cl (75.77%) and ^{37}Cl (24.23%). The relative abundance of these two is why chlorine has a standard atomic weight of 35.45.

Given the molecular peaks clustered just above 180u, the molecular weight of our compound must be 181.5 and the *molecular formula* of our compound must be $C_6Cl_3H_3$.

6. A

Empirical formula from percent composition is a classic Chem 101 problem. The first step is to assume you have 100g of the substance. Then you determine how many moles of each component that represents. Then for the subscripts you figure out the simplest whole number ratio among the moles of components.

$$39\text{g C} \left(\frac{1 \text{ mol}}{12.0 \text{ g C}} \right) = 3.3 \text{ mol}$$

$$16\text{g H} \left(\frac{1 \text{ mol}}{1.0 \text{ g H}} \right) = 16.0 \text{ mol}$$

$$45\text{g N} \left(\frac{1 \text{ mol}}{14.0 \text{ g N}} \right) = 3.2 \text{ mol}$$

The simple whole number ratio is 1:5:1, so the correct empirical formula is CH_5N .

7. D

Heating the hydrate drives off the water. The molecular weight of magnesium sulfate (MgSO_4) is 120.4 g/mol. The molecular weight of water is 18.0 g/mol. To determine n in the expression $\text{MgSO}_4 \cdot n\text{H}_2\text{O}$ from the given information, we can construct and solve the following equation.

$$\frac{120.4}{120.4 + n \cdot 18.0} = 0.49$$

$$n = 7$$

8. B

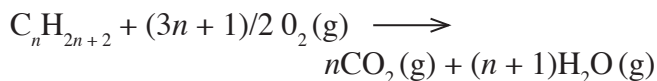
The masses of water and carbon dioxide produced in the combustion reaction correspond to two moles of each. From this we know that four moles of hydrogen and two moles of carbon were consumed in the reaction. Figuring out how many moles of oxygen were in the original compound is more difficult because we don't know how much reacted from the air. However, we do know the mass of the original sample. If we subtract out the weight of four moles of hydrogen and two of carbon, we are left with 16 grams of oxygen, or one mole.

9. A

From the reaction it can be seen that one mole of acetylene is produced for every two moles of water consumed. Remember that one ml of water equals one gram, so 18 ml would equal one mole. Therefore, 0.5 moles (13g) of acetylene is produced.

10. B

If n equals the number of carbons in an unbranched alkane, $2n + 2$ equals the number of hydrogens. Therefore, we can express the stoichiometry of the combustion reaction as follows:



One mole of ideal gas at STP occupies 22.4 liters, so 157 L gas equals seven moles of gas. For n moles of CO_2 plus $n + 1$ moles of H_2O to equal 7 moles, n must equal 3.

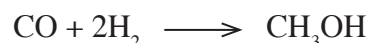
11. B

Think on the page with conversion factors and the problem will unfold for you and give you the atomic weight of the metal, Ru (101.07u). After setting out the conversion factors, you should be able to use mental math to see that the atomic weight will be very close to 100 g/mol.

$$\left(\frac{6.75 \text{ g X}}{1.6 \text{ g O}} \right) \left(\frac{16 \text{ g O}}{\text{mol O}} \right) \left(\frac{3 \text{ mol O}}{2 \text{ mol X}} \right) = \left(\frac{101 \text{ g X}}{\text{mol X}} \right)$$

12. C

The first step is to write out the balanced reaction.



The stoichiometry dictates that 1 mol CO reacts with 2 mol H_2 to form 1 mol CH_3OH , but the amounts of our reagents in the vessel aren't at these molar ratios.

$$14 \text{ g CO} \left(\frac{1 \text{ mol}}{28 \text{ g}} \right) = 0.5 \text{ mol CO}$$

$$10\text{g H}_2 \left(\frac{1 \text{ mol}}{2 \text{ g}} \right) = 5 \text{ mol H}_2$$

Instead of a 1:2 molar ratio between CO and H_2 , what's actually present is a 1:10 ratio. We have H_2 in excess. This means that CO is the *limiting reagent*. It will dictate the amount of CH_3OH per the stoichiometry. If 0.5 mol CO are consumed, 0.5 mol CH_3OH will form, or 16 g (MW $\text{CH}_3\text{OH} = 32 \text{ g/mol}$).