



Hemoglobin

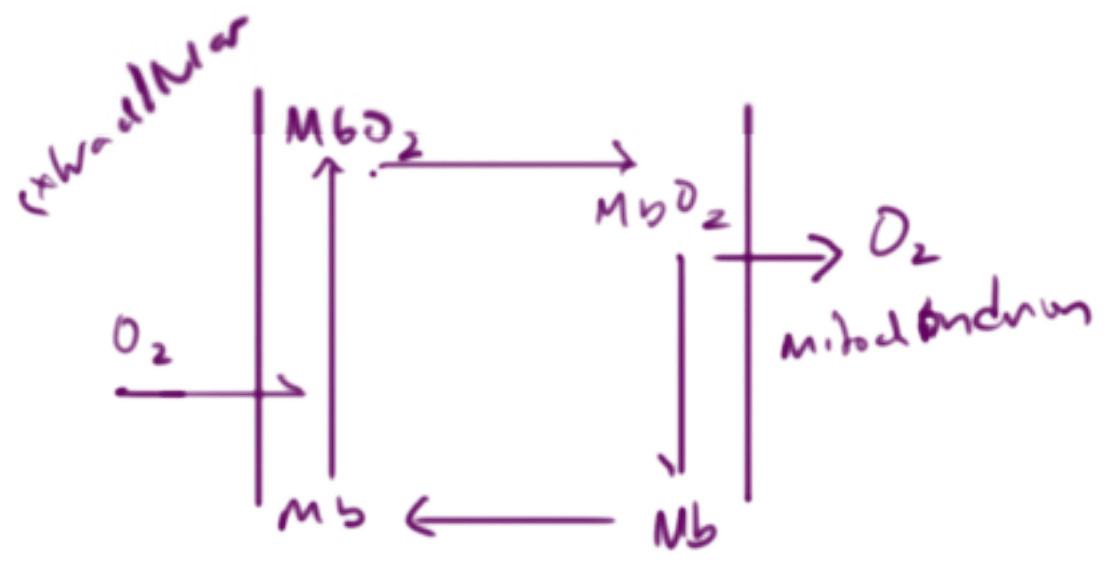
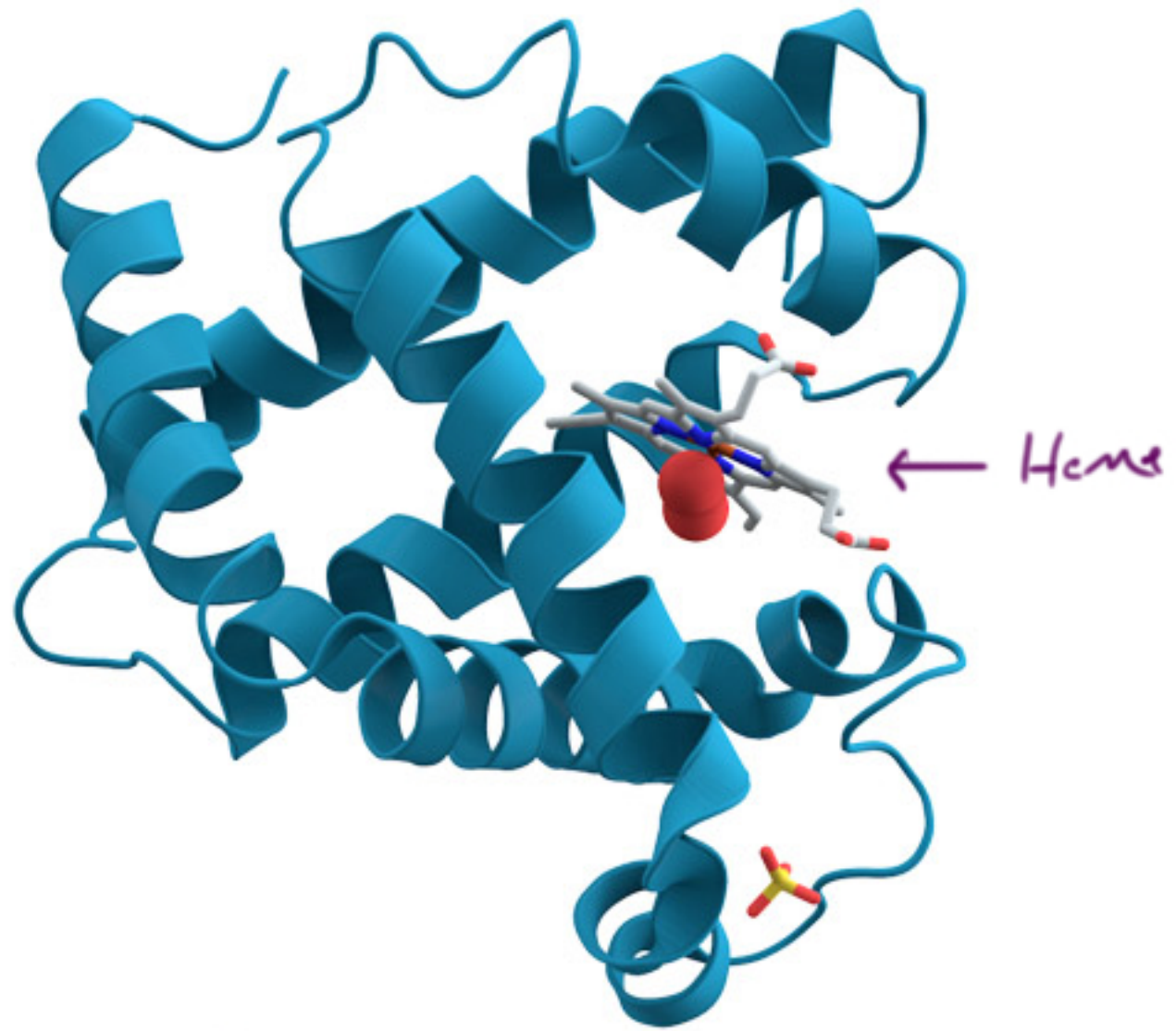
(with coordination chemistry)

Session Slides with Notes

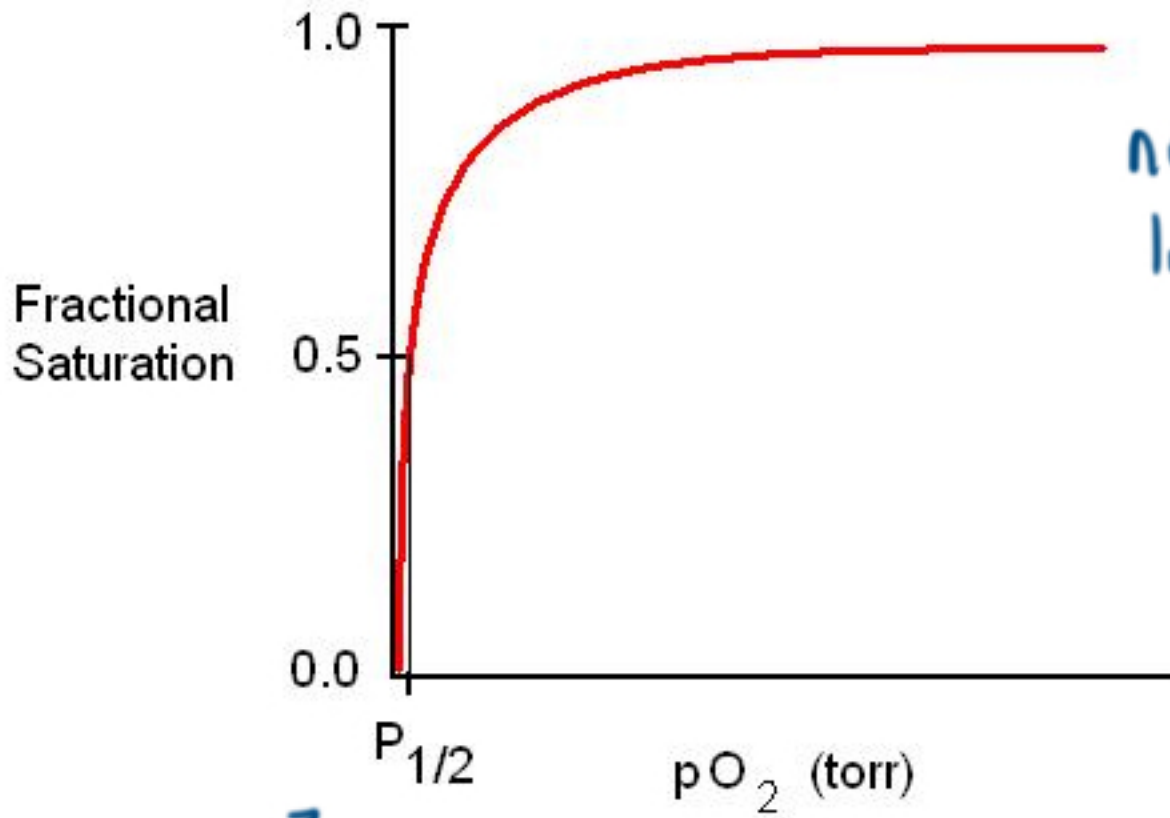
This PDF includes the teaching slides the Integrated MCAT Course (www.integrated-mcat.com). Many of the figures used in this presentation are creations of the Integrated MCAT Course, published under a Creative Commons Attribution NonCommercial ShareAlike License. Attribution information for the public license figures which are not our creations, as well as downloadable teaching slides, can be found at www.integrated-mcat.com/image_archive.php.



Myoglobin



Oxygen binding by Myoglobin



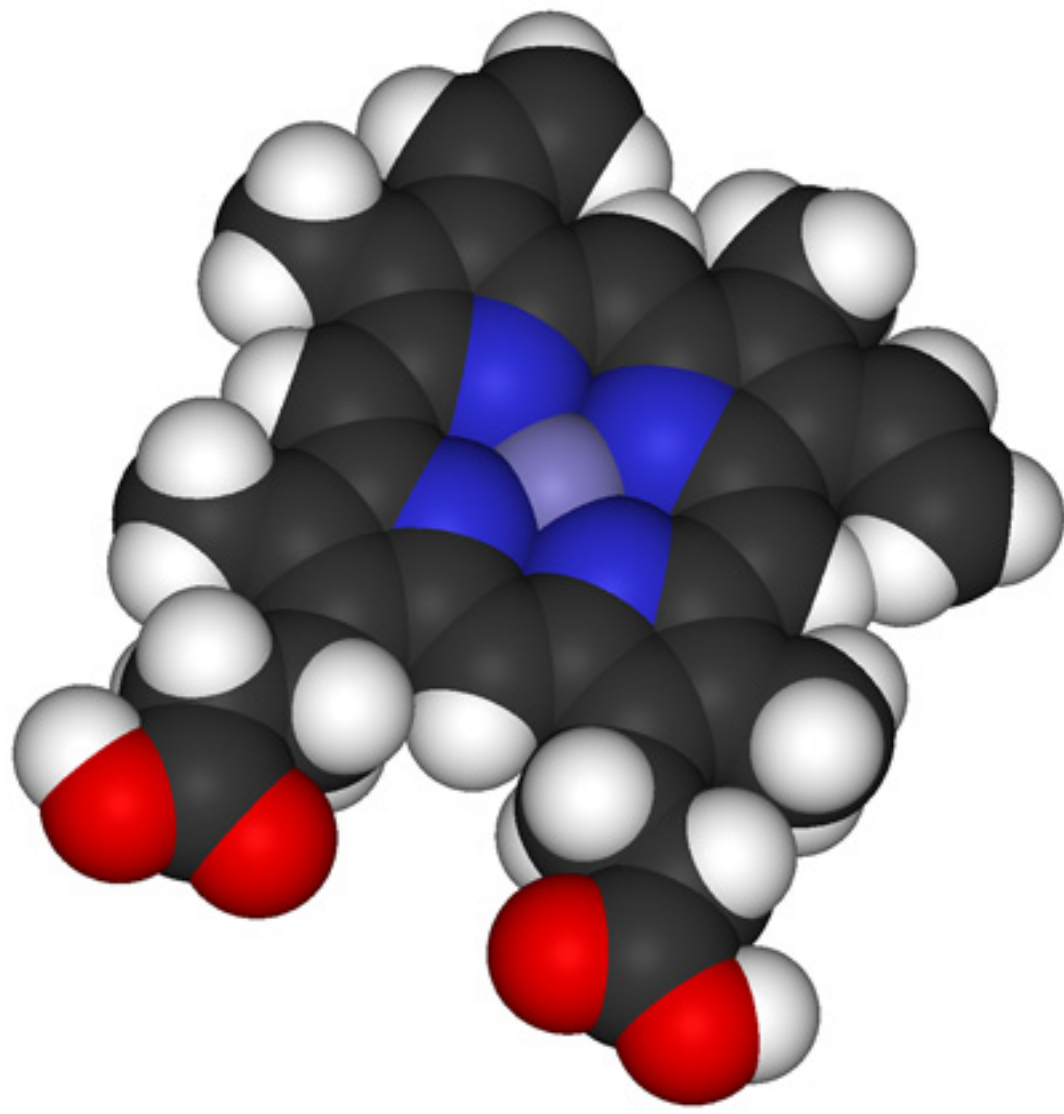
not sigmoidal
like hemoglobin

2.75 torr

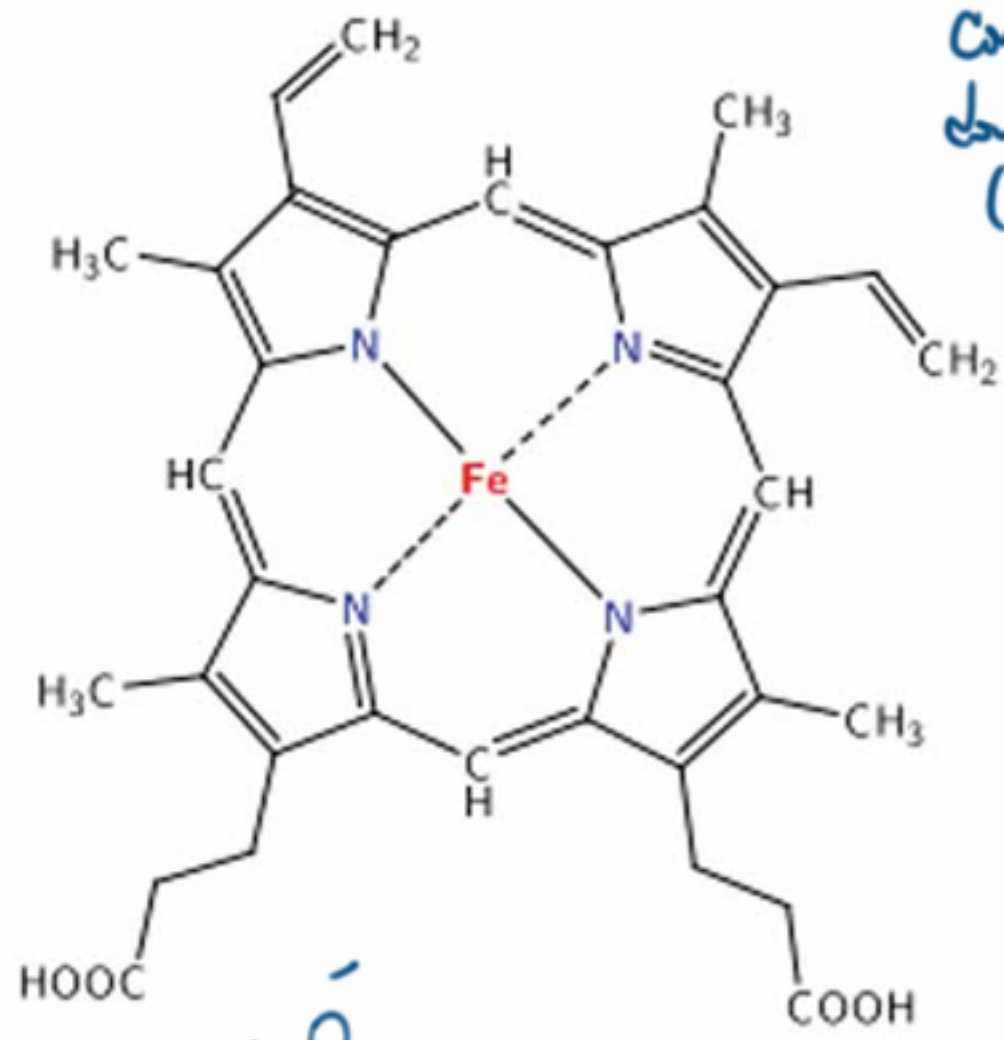
P_{50}

← concentration at
half saturation

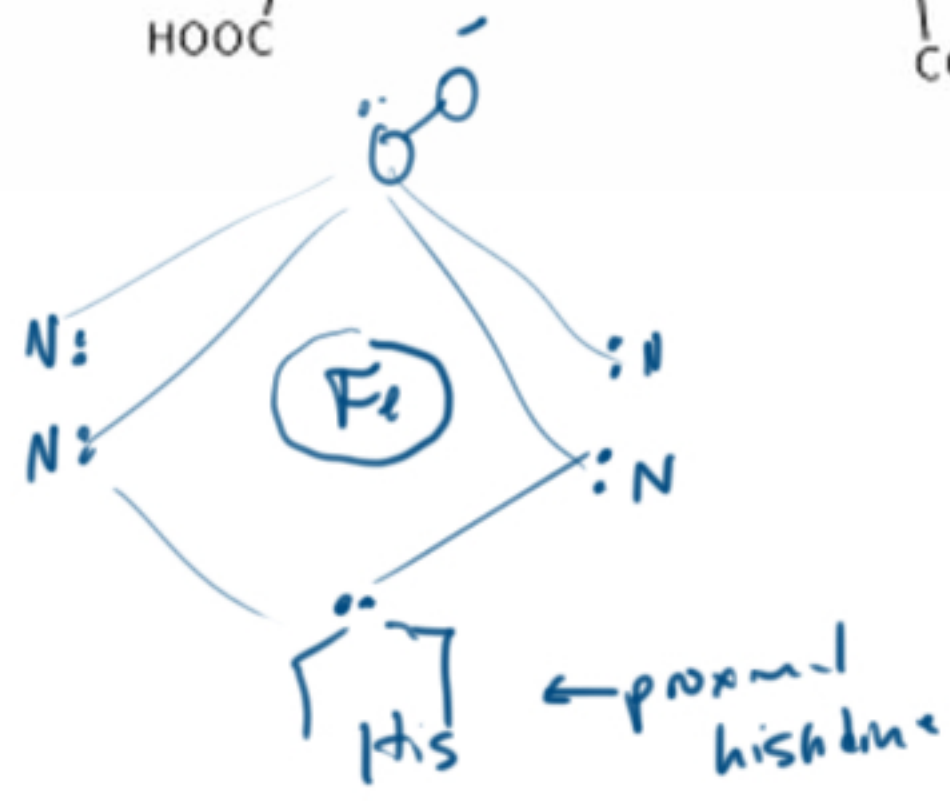
with hemoglobin
 $P_{50} \approx 27$ torr



Heme =
porphyrin
+
iron



Conjugated double bonds (extensive) means it is a pigment



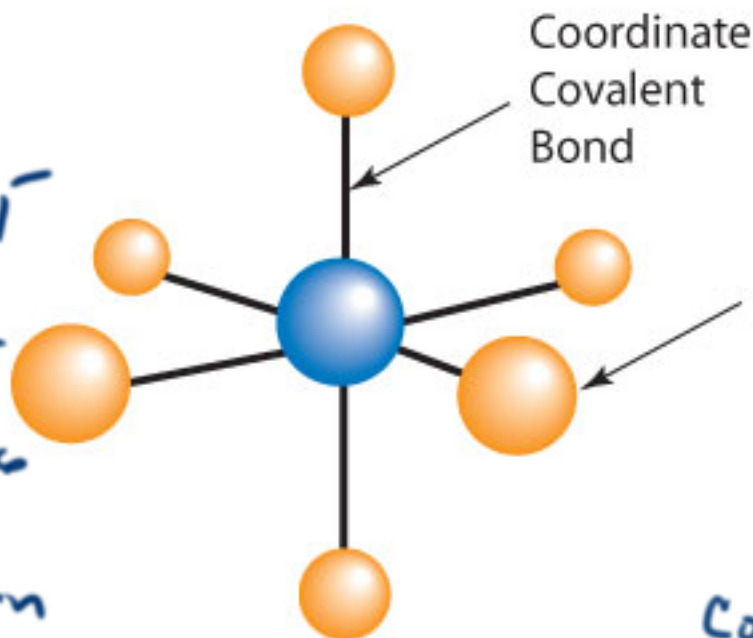
Coordination Complex

← proximal histidine

brief coordination chemistry primer



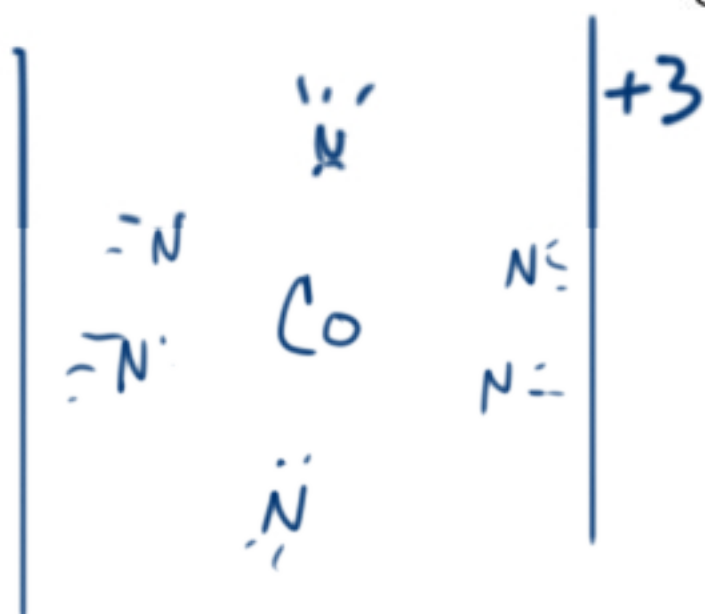
↑
complex ion



Coordination Complex

Ligand ← Lewis base
 $\text{H}_2\text{O}, \text{NH}_3, \text{Cl}^-$
etc

Coordination # is the # of electron pairs involved.
(may be polydentate ligands)



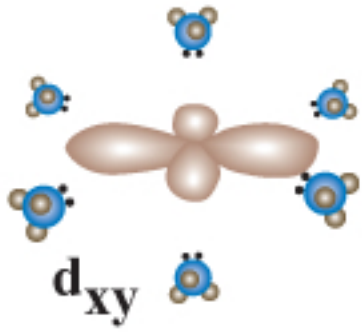
Complex ion

higher energy

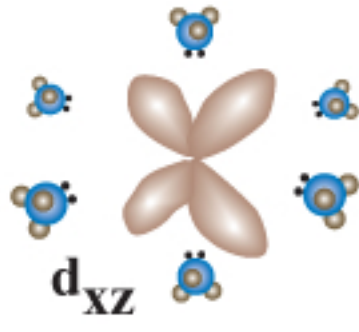


$d_{x^2-y^2}$

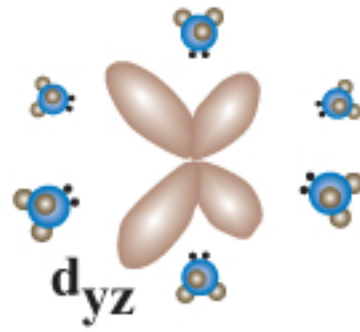
d_{z^2}



d_{xy}

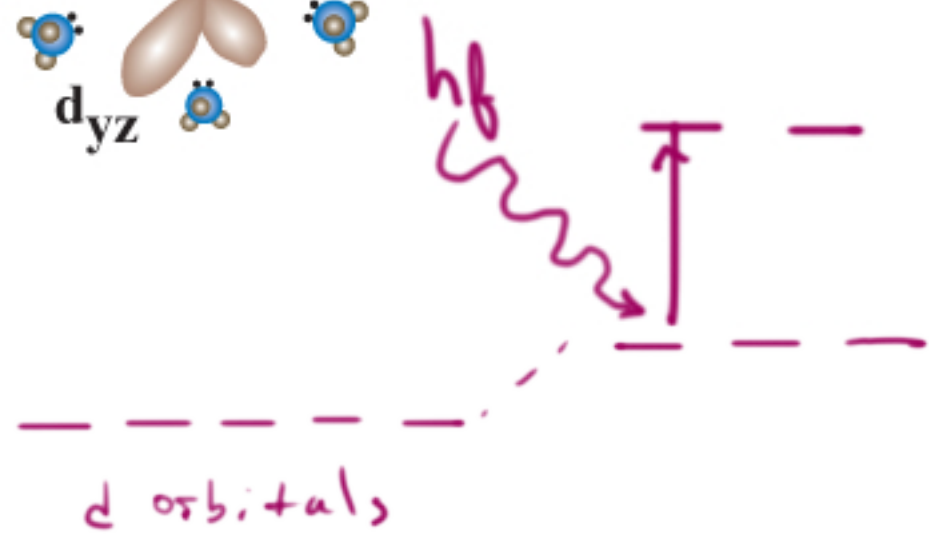


d_{xz}

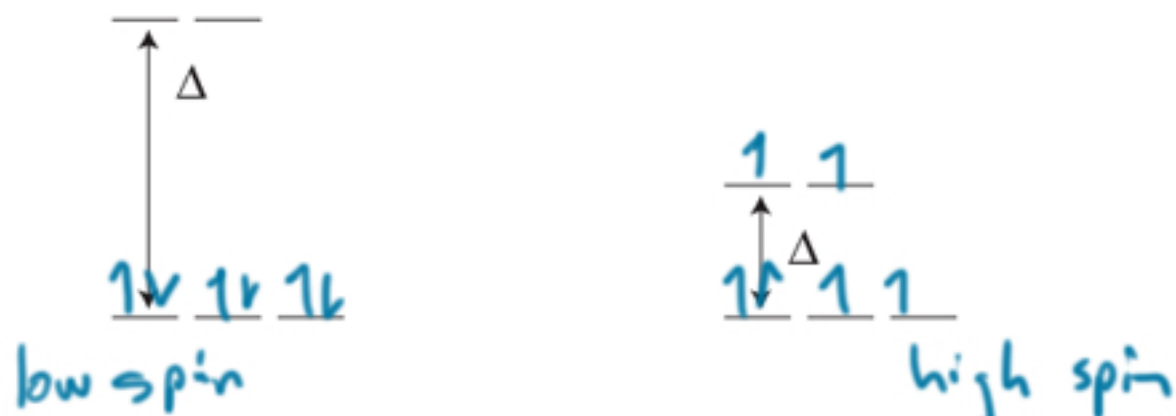
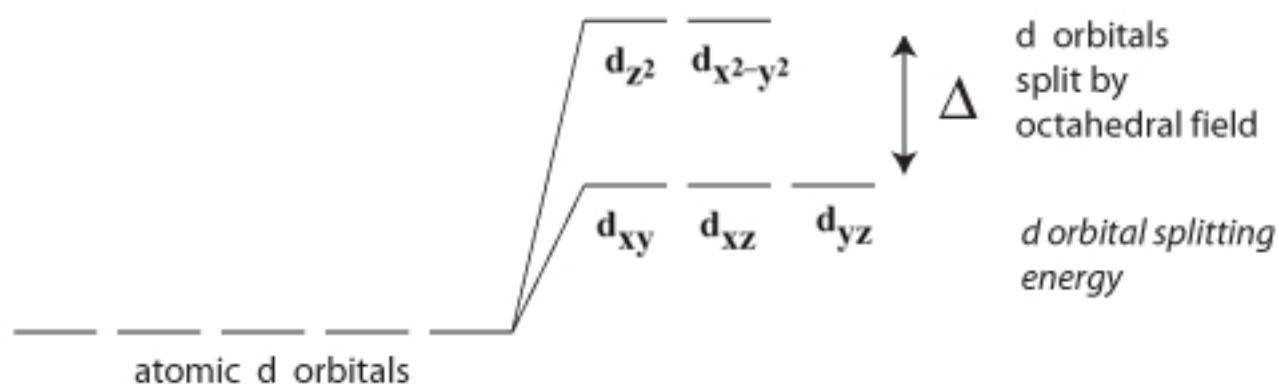


d_{yz}

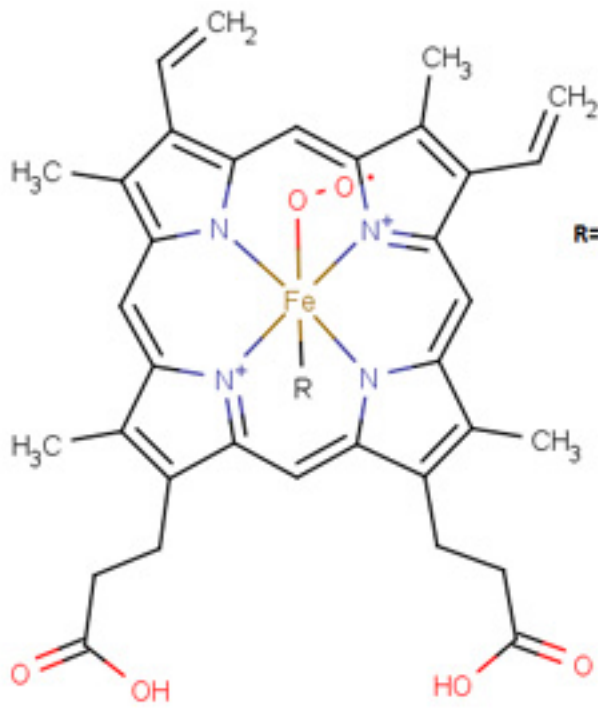
Coordination complexes are often brightly colored



Crystal field splitting



High d orbital splitting energy leads to 'low spin' complexes



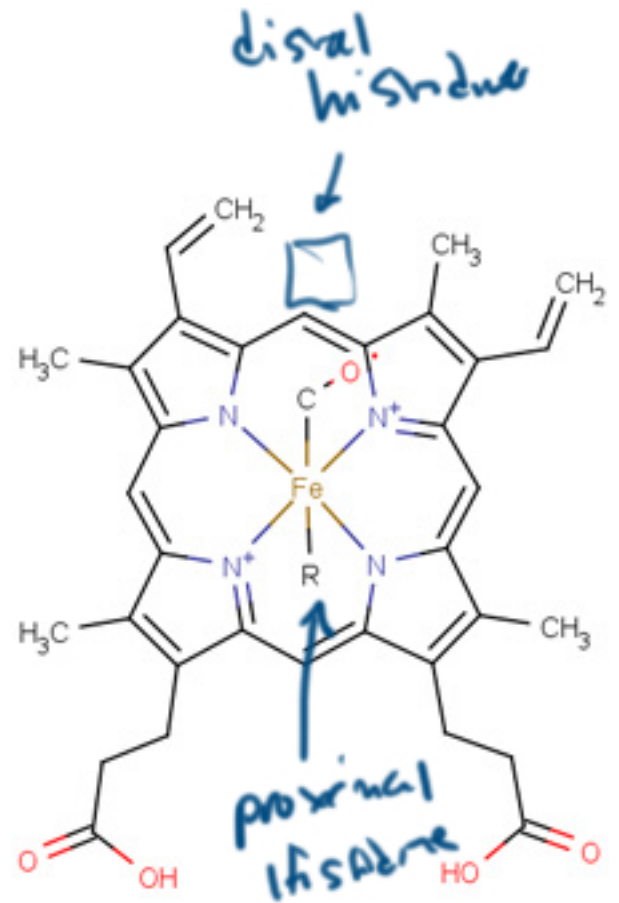
Oxyhemoglobin

R= globin protein

— — — — —
superoxide
electron
coupling
 ↓
↑↓ ↑↓ ↑

in oxyhemoglobin
 low spin Fe^{III}

- yet HbO₂ is diamagnetic

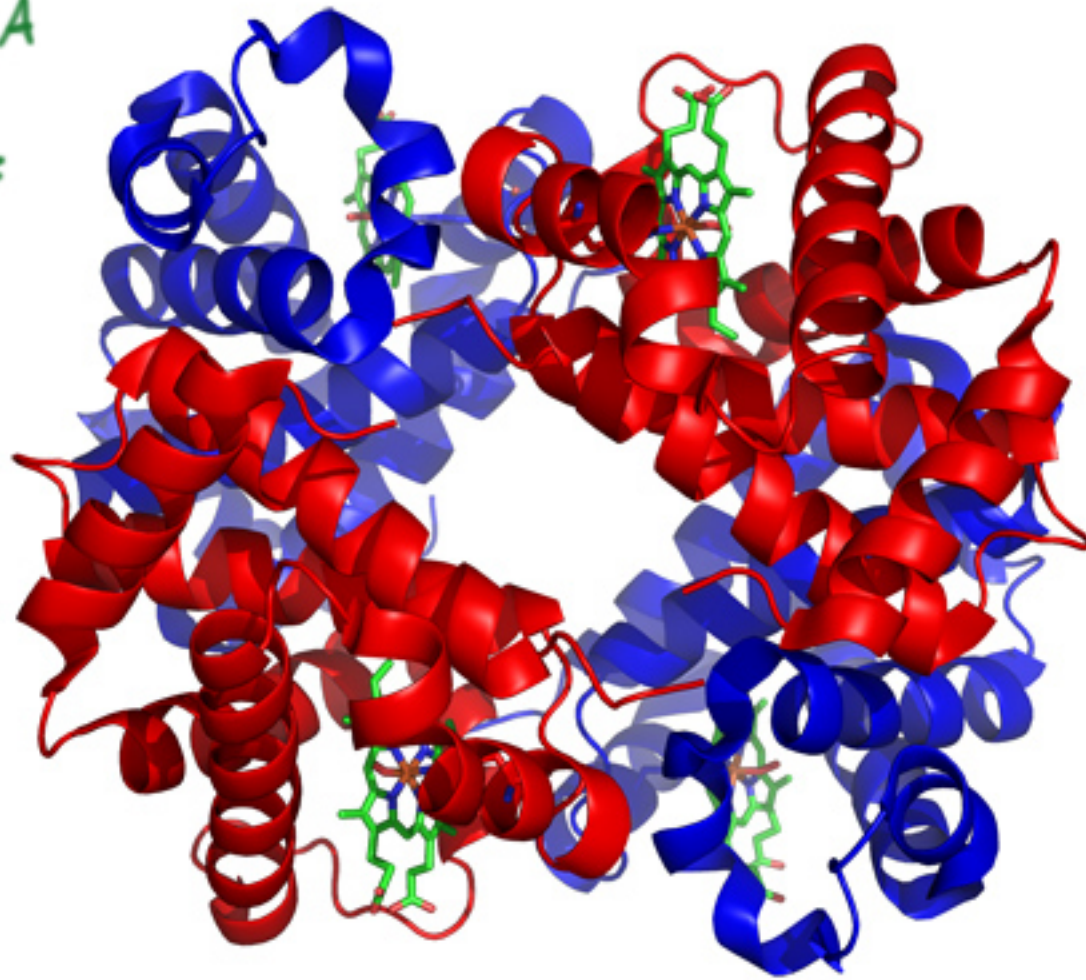


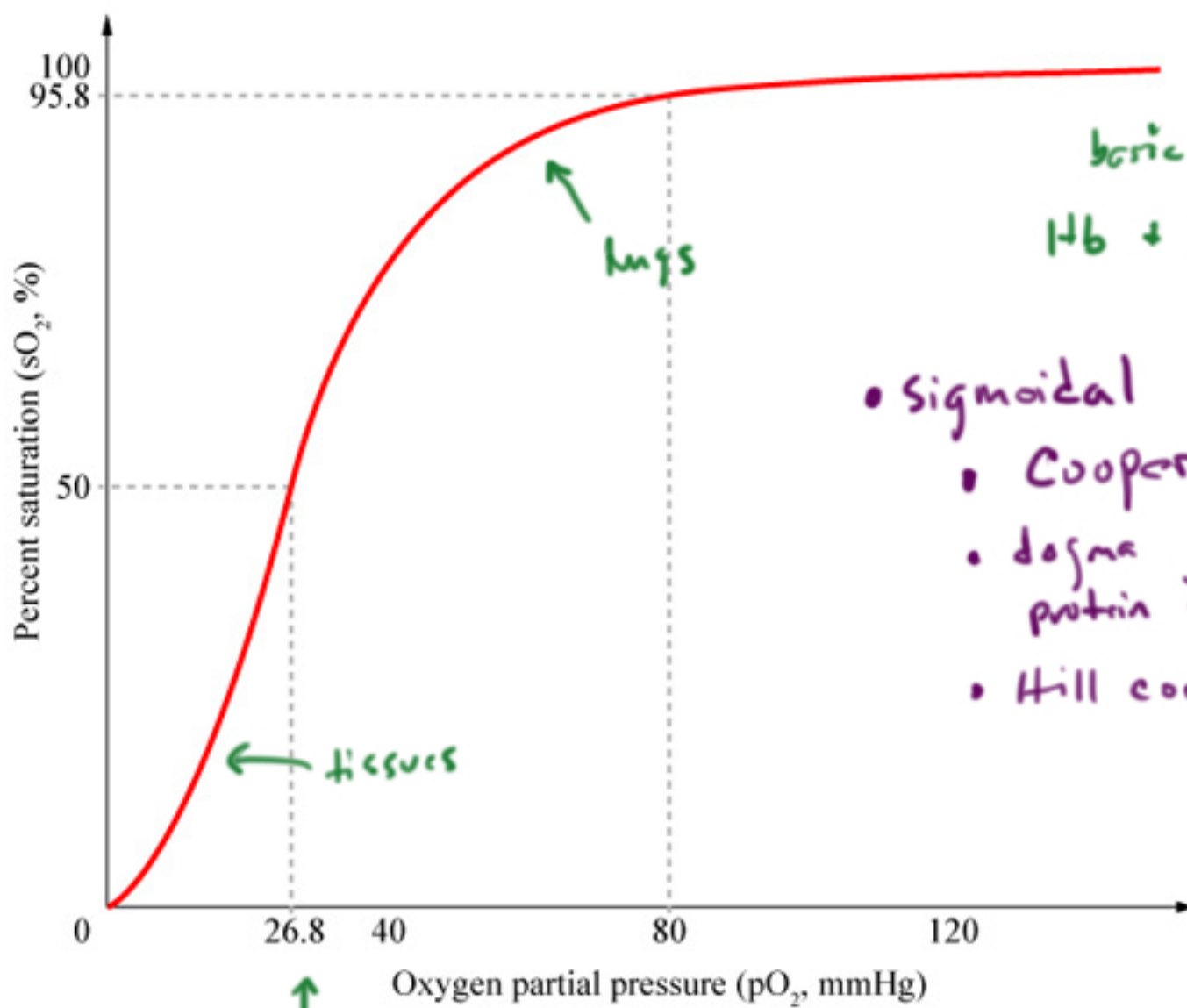
Carboxyhemoglobin

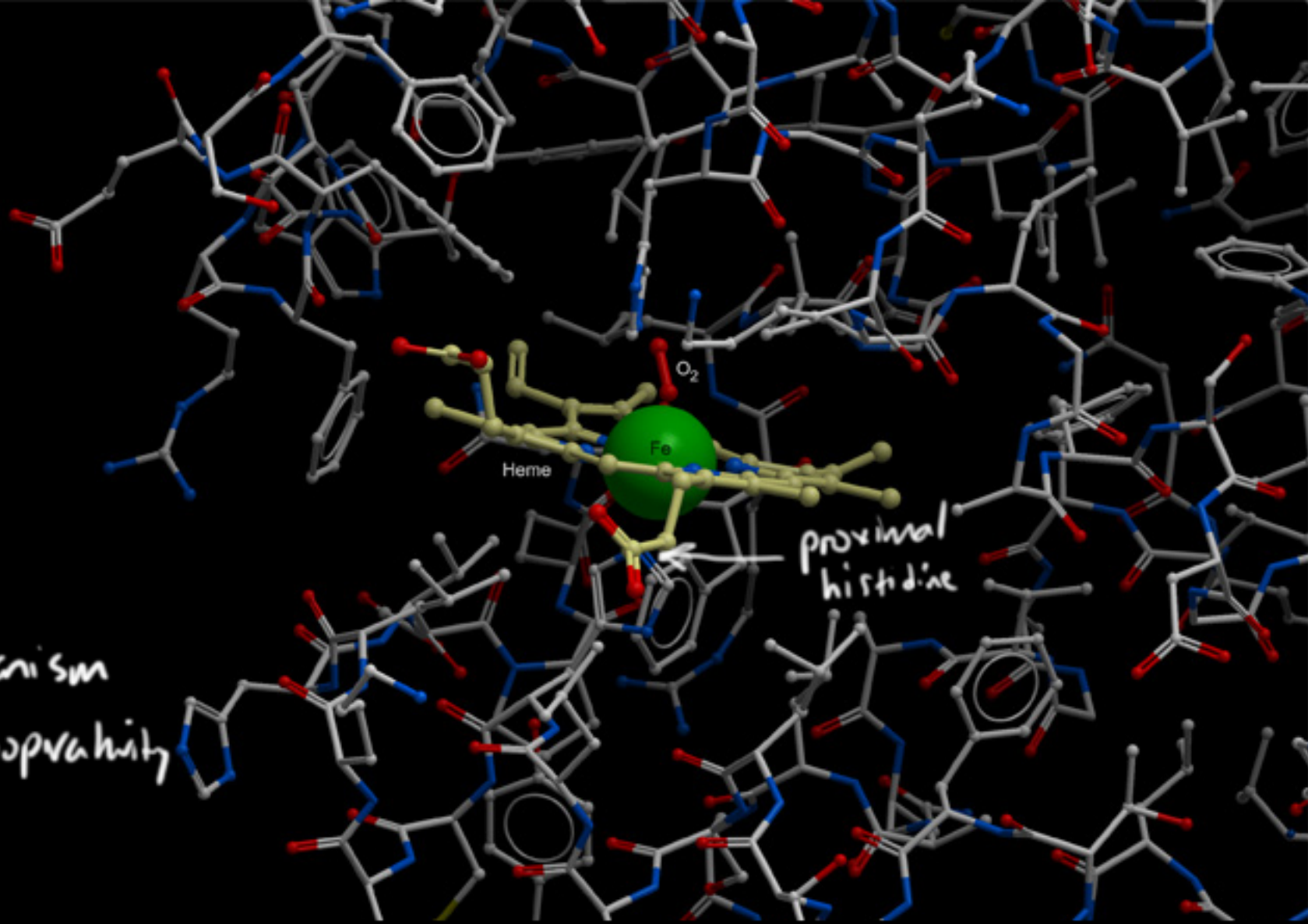
$\alpha_2\beta_2$ HbA

$\alpha_2\gamma_2$ HbF

Hemoglobin







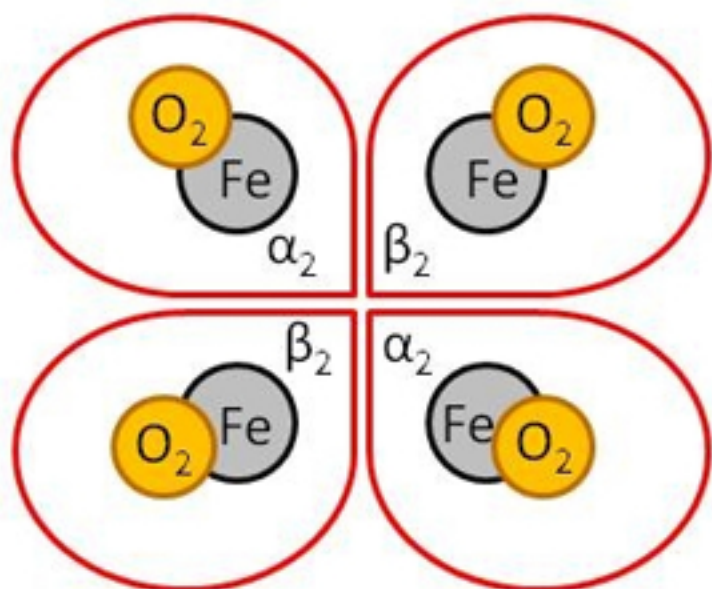
Mechanism of cooperativity

When O₂ binds, the Fe shifts into the porphyrin plane, pulling the proximal histidine. This triggers a conformational change. One $\alpha\beta$ shifts 15° to the other. All the other binding sites are now more facilitative.

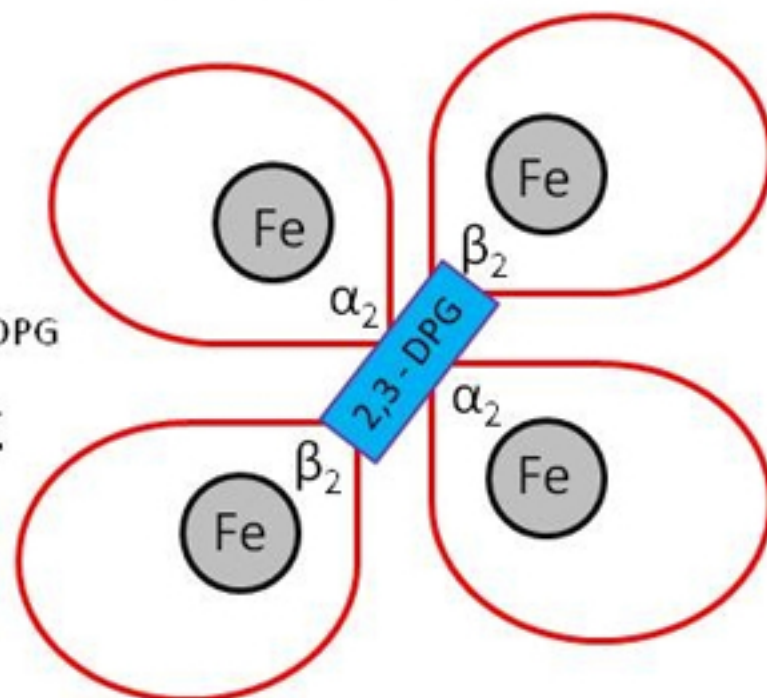
Oxygen Binding and Unloading

Monod Jacob Model

Oxyhaemoglobin

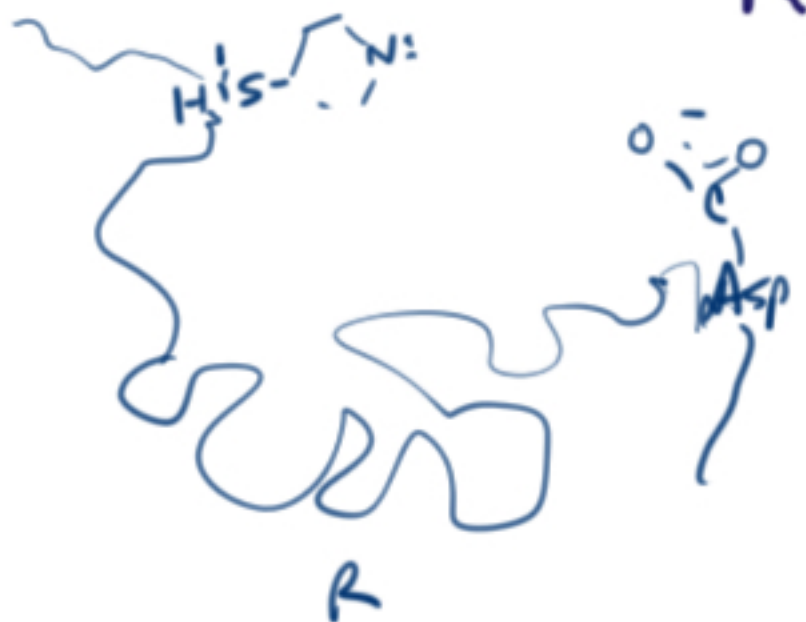


Deoxyhaemoglobin



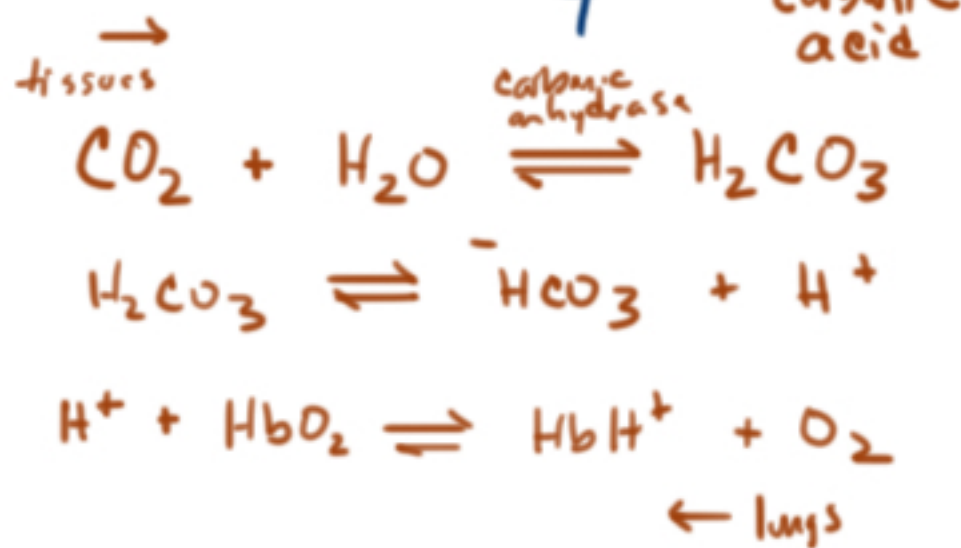
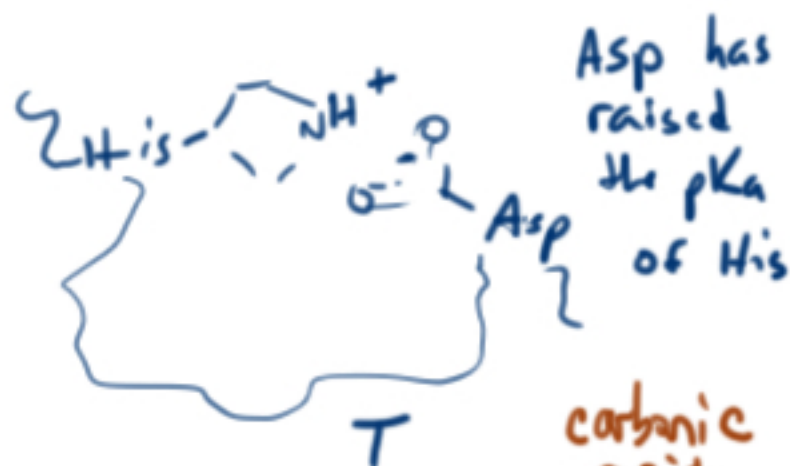
Increasing H^+
Increasing 2,3-DPG
Falling $[O_2]$
 \rightleftharpoons
 Rising $[O_2]$

Relaxed Binding Structure

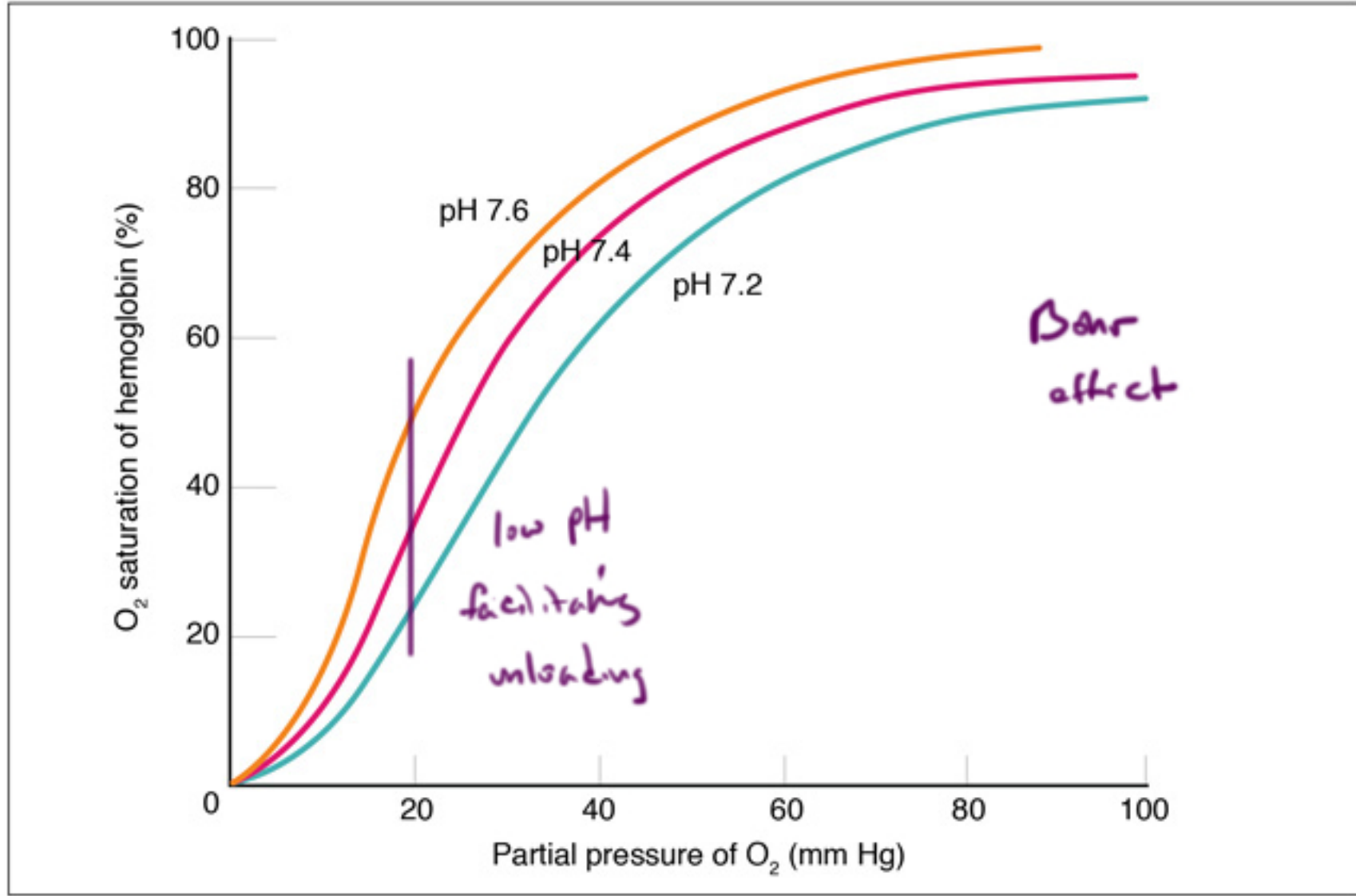


Tight Binding Structure

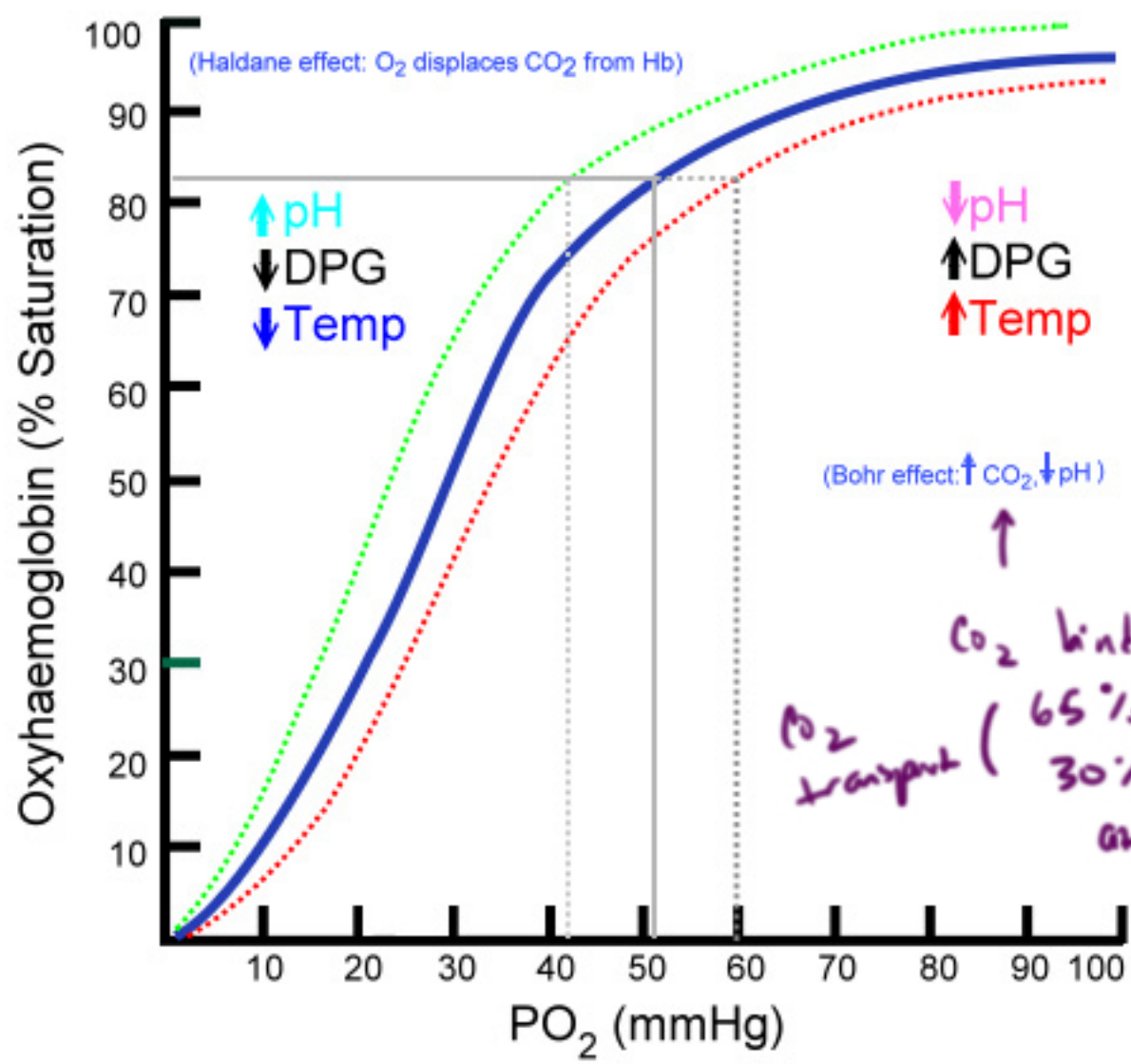
Bohr effect - H^+ stabilizes the tight structure.
(also CO_2 , DPG)



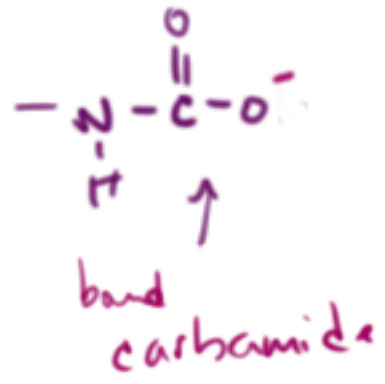
$pKa = 6.3$
 H_2CO_3
 $pH = pKa + \log \left(\frac{[A^-]}{[HA]} \right)$
 $7.3 = 6.3 + \log \left(\frac{10}{1} \right)$



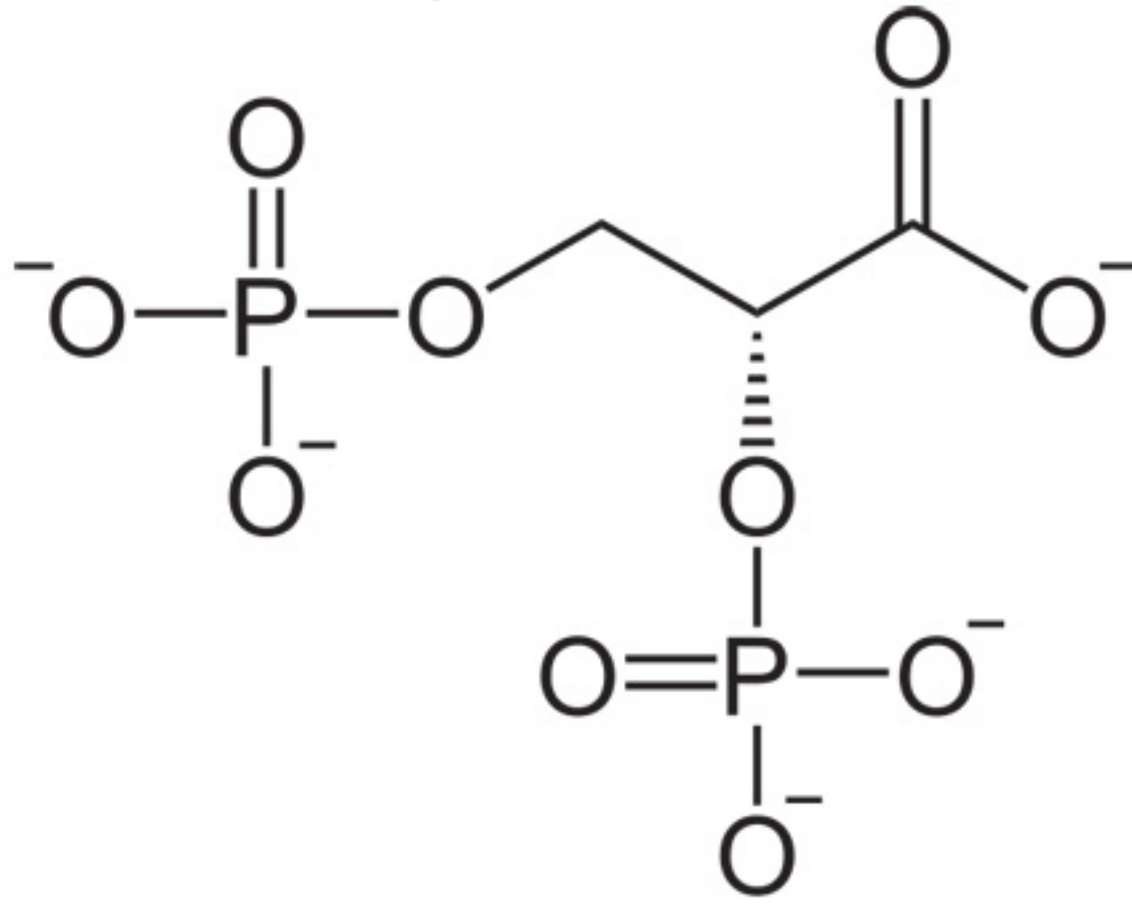
(b) Effect of pH



CO₂ binds Hb
 O₂ transport (65% as ⁻HCO₃
 30% bound directly
 at N terminus



DPG



• stabilizes the tight structure

• reduces the O_2 affinity

• facilitates unloading

